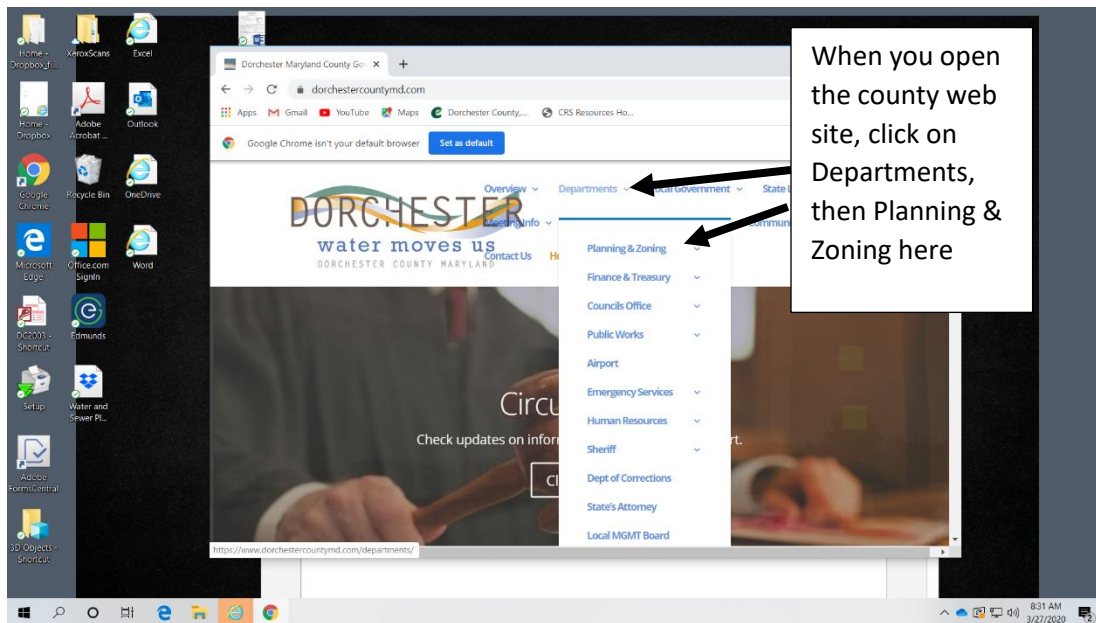
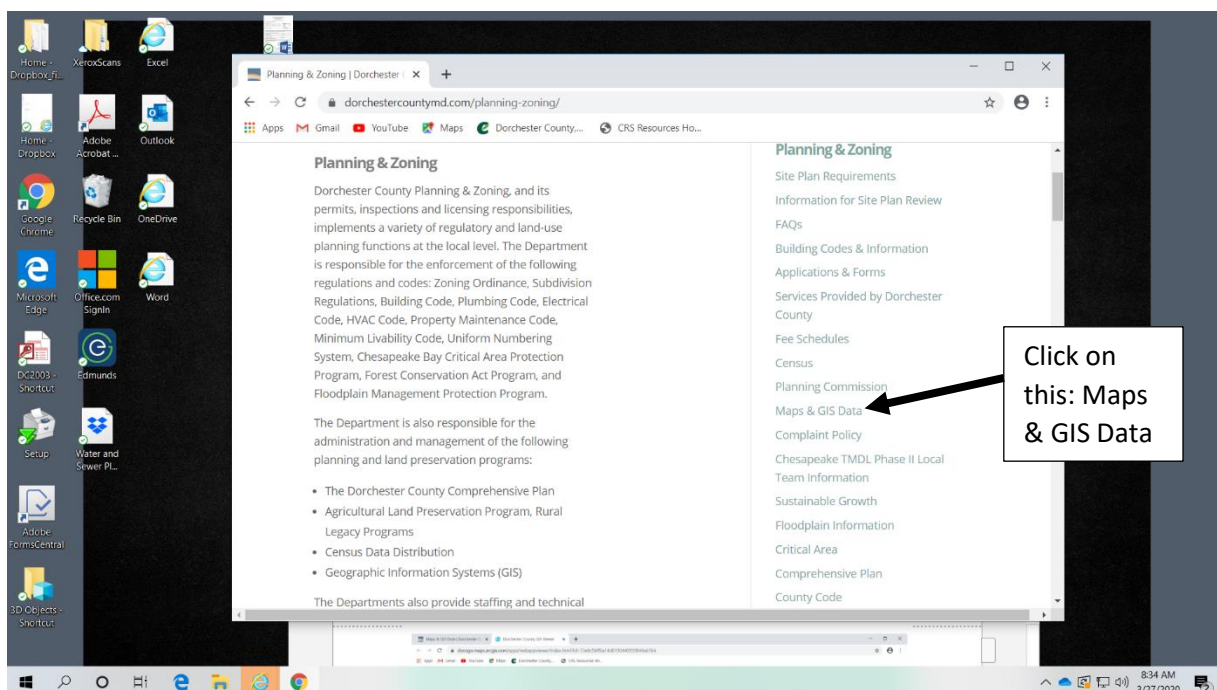


GIS Maps & Data Access Instructions:

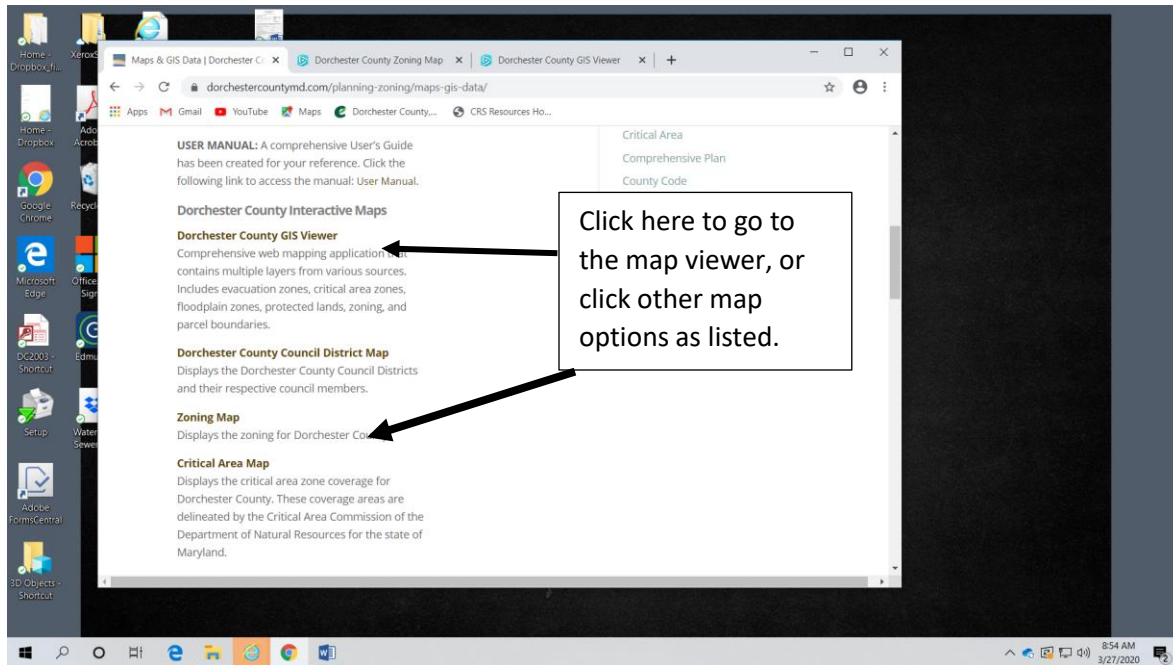
First, go to the Dorchester County web site at dorchestercountymd.com and look at the top for “Departments”. Planning & Zoning is one of the options. Click on Planning & Zoning.



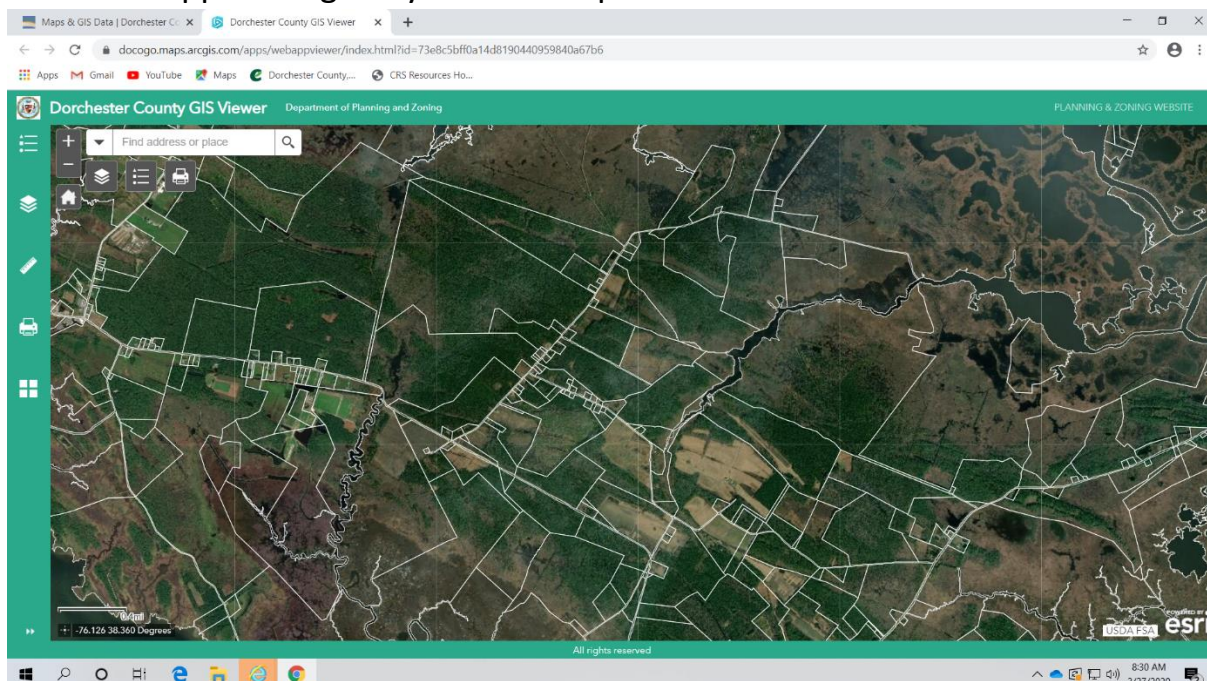
When you open the Planning & Zoning web page, you will see a list of resources to choose from. Find the “Map & GIS Data” option and click on it.



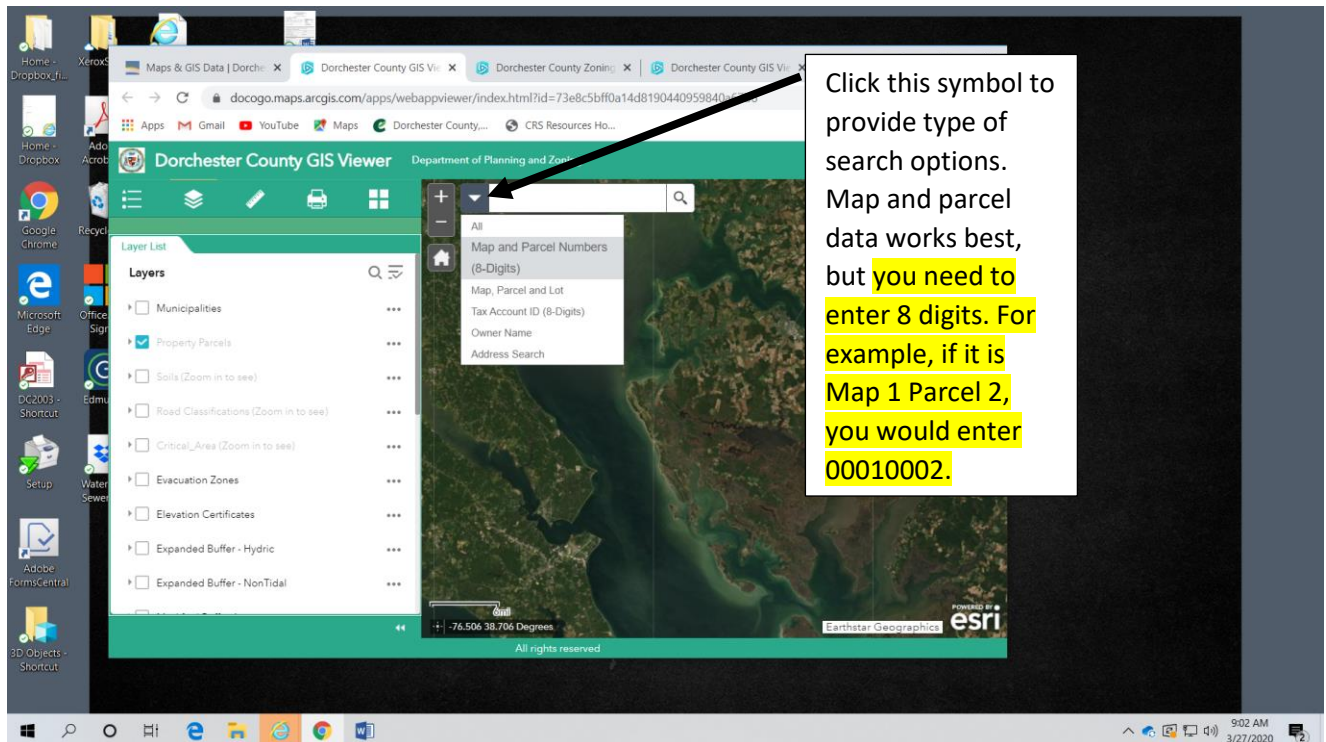
When you open the Maps & GIS tab, it will take you to various map options. You can go directly to zoning or critical area maps or you can use the viewer to put in specific property information and research map options to view in the legend.



When you select a map option, a disclaimer will pop up that you will need to agree to the usage terms and conditions. Just click that you agree and then OK and it will take you to this map viewer. The map viewer looks like this. The white bar in the upper left gives you search options.



When you click on the drop down symbol, see search options then type the information in the white rectangle search area and hit the magnifier glass to search the site. Notice the layers on the left. You can turn on or off information you want to see once you have the site you want shown.



If you need specific map and parcel data, use the State Department of Assessment and Taxation (SDAT) real property web site to get that information. Once you have that information you can enter it into the viewer search area. Map and parcel information can be found at: <https://sdat.dat.maryland.gov/RealProperty/Pages/default.aspx> . Or you can search by address like the Government Office Building at 501 Court Lane in Cambridge, Maryland as shown below.

You can scroll with the mouse or use zoom options to make parcel size and area larger or smaller.

